

est 1979

Jeremy  
Leaf & Co.



Huntingdon Road, East Finchley, London

£1,350,000

- Semi-detached four bedroom house
- Great entertaining space
- South facing garden
- Close to shops and Northern Line (Zone 3)
- Through Lounge
- Eat in kitchen
- Two bathrooms (one en-suite)

98 High Road, London, N2 9EB  
020 8444 5222

[eastfinchley@jeremyleaf.co.uk](mailto:eastfinchley@jeremyleaf.co.uk)  
<https://www.jeremyleaf.co.uk/>

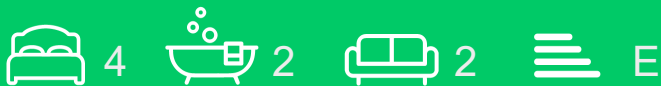


# Huntingdon Road, London, N2 9DX

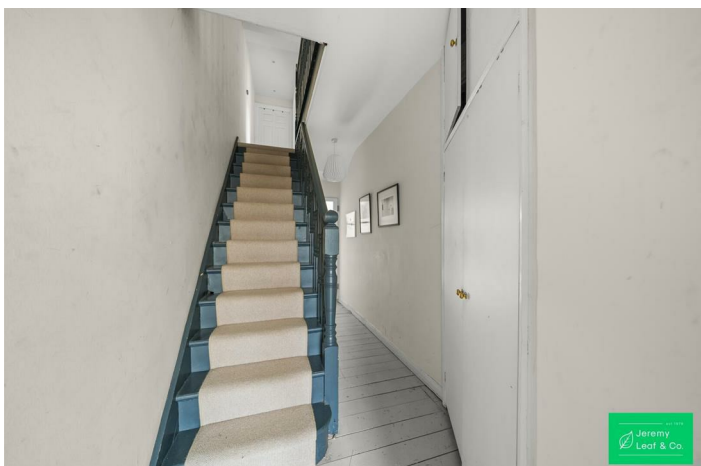
We offer for sale a spacious four bedroom Victorian period semi detached house located on a highly desirable County road in the heart of East Finchley. Huntingdon Road is an area which is the perfect location for family life. The house has a great deal of entertaining space on the ground floor with two receptions and an eat-in kitchen which has direct access to a private garden.

On the first floor there are three double bedrooms and a large family bathroom.

The second floor is the principal suite, a large bright bedroom with a bathroom leading off the hallway. The house is offered in good condition and located close to the shops and restaurants of East Finchley High Road. East Finchley Underground Station (Zone 3) and Cherry Tree Wood is a short walk away.



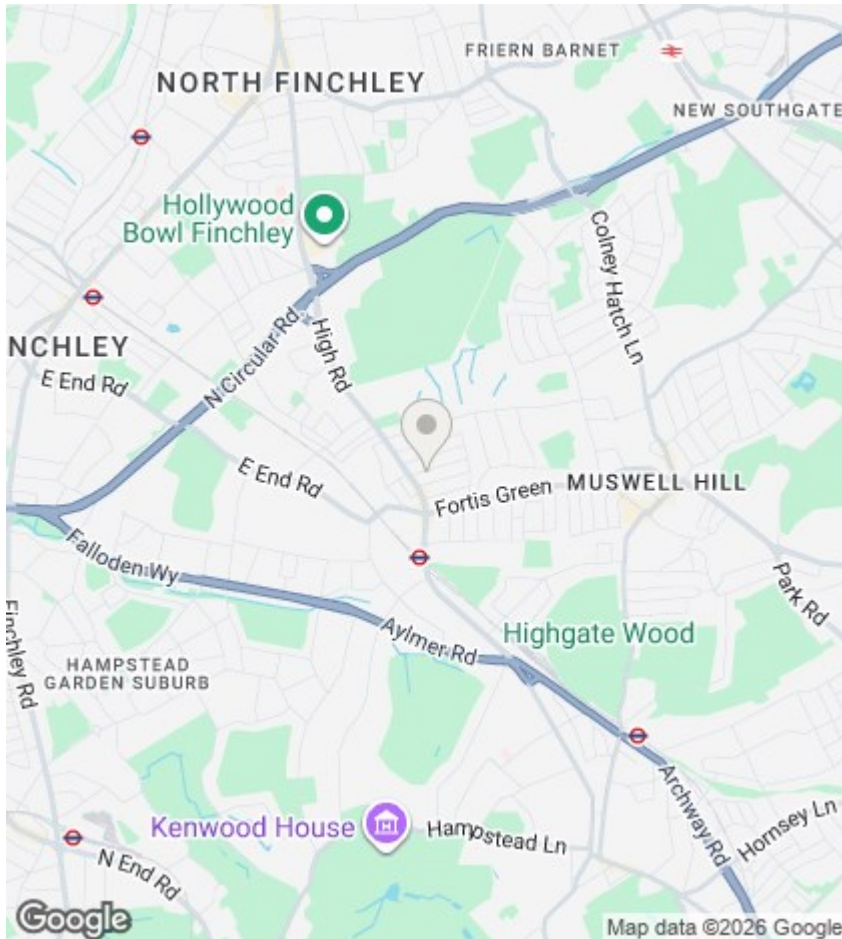
Council Tax Band: E











## Directions

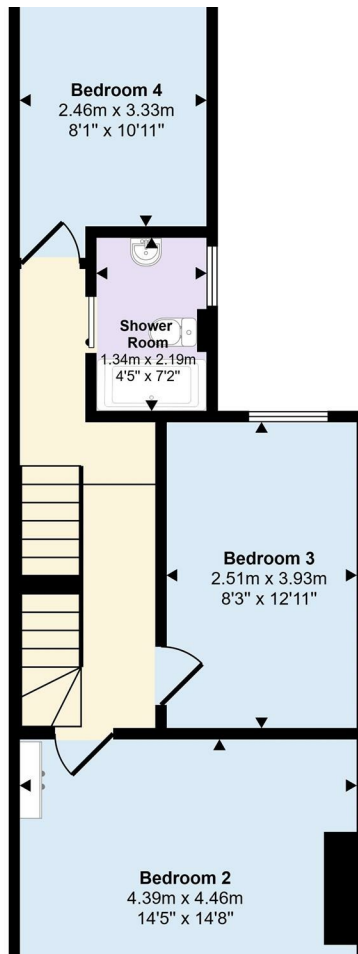
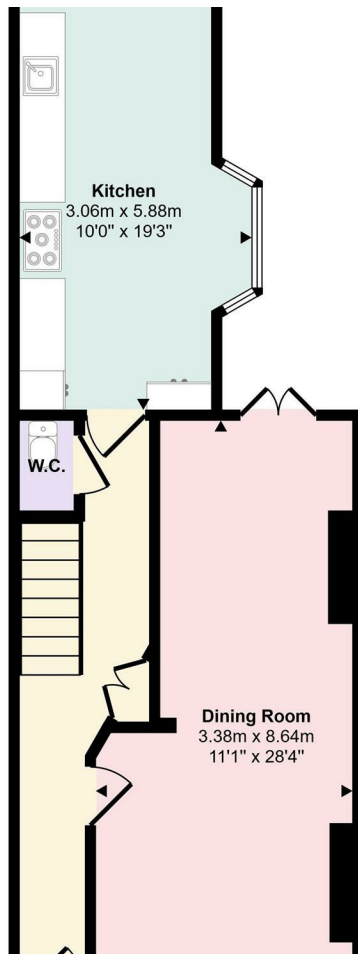
## Viewings

Viewings by arrangement only. Call 020 8444 5222 to make an appointment.

## EPC Rating:

E

Energy Efficiency Rating		
	Current	Potential
Very energy efficient - lower running costs		
(92 plus) <b>A</b>		
(81-91) <b>B</b>		
(69-80) <b>C</b>		79
(55-68) <b>D</b>		
(39-54) <b>E</b>	48	
(21-38) <b>F</b>		
(1-20) <b>G</b>		
Not energy efficient - higher running costs		
England & Wales		EU Directive 2002/91/EC



Second Floor